

Pilares que terminam em
BARRILETE
Concreto: C25, em geral
Aço: CA-50-A e CA-60-B
Escala: 1:50

Resumo Aço BARRILETE Pilares	Comp. total (m)	Peso+10% (kg)	Total
CA-50-A Ø10	175.2	121	
Ø12.5	22.5	24	145
CA-60-B Ø5	429.2	74	74
Total			219

BARRILETE
Armadura longitudinal inferior
Concreto: C25, em geral
CA-50-A e CA-60-B
Escala: 1:50

Resumo Aço BARRILETE	Comp. total (m)	Peso+10% (kg)	Total
Armadura longitudinal inferior			
CA-50-A	ø6.3	168.8	46
CA-60-B	ø5	173.7	30
Total			76

BARRILETE
Armadura transversal inferior
Concreto: C25, em geral
CA-50-A e CA-60-B
Escala: 1:50

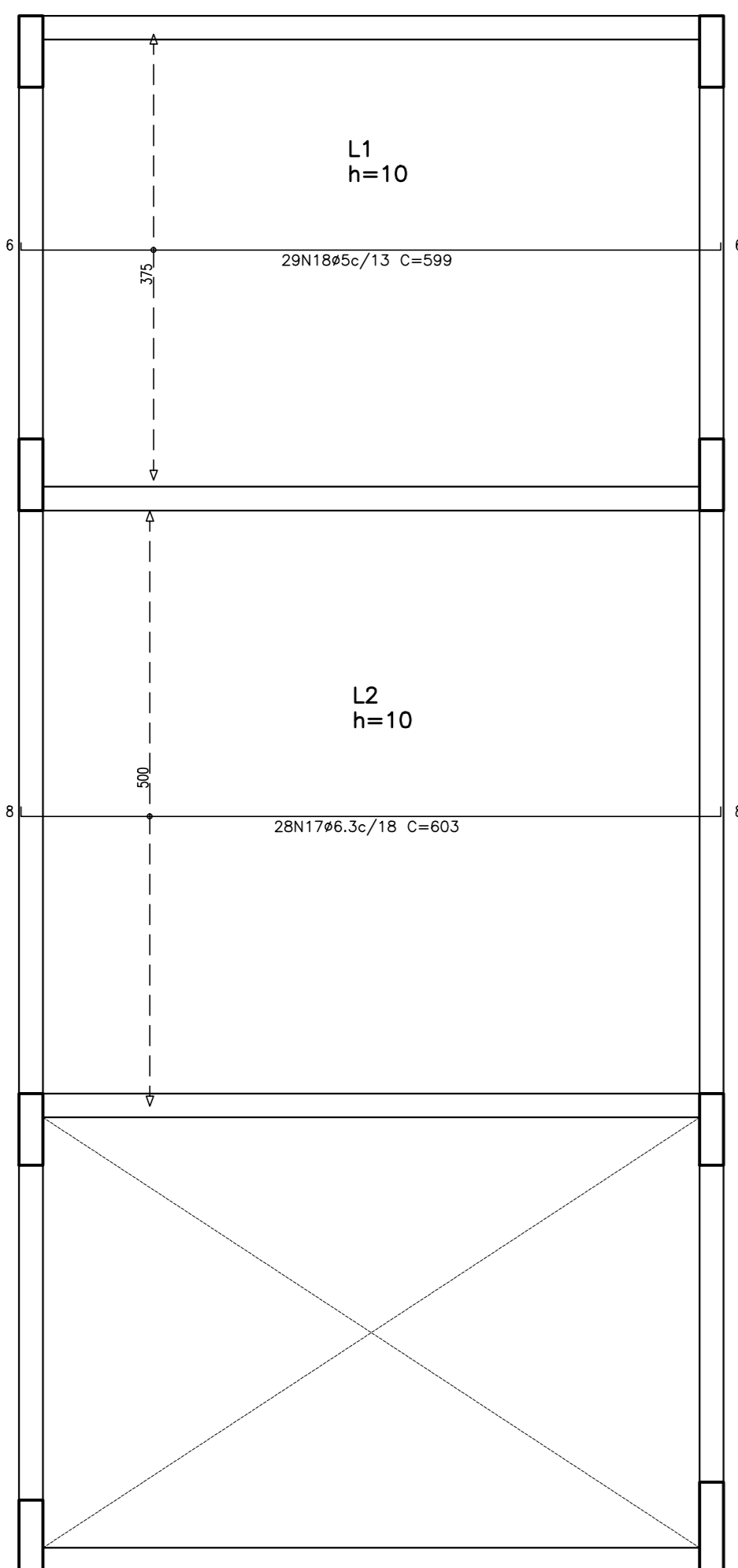
Resumo Aço BARRILETE Armadura transversal inferior	Comp. total (m)	Peso+10% (kg)
CA-60-B $\varnothing 5$	486.1	84

BARRILETE
Armadura longitudinal superior
Concreto: C25, em geral
CA-50-A e CA-60-B
Escala: 1:50

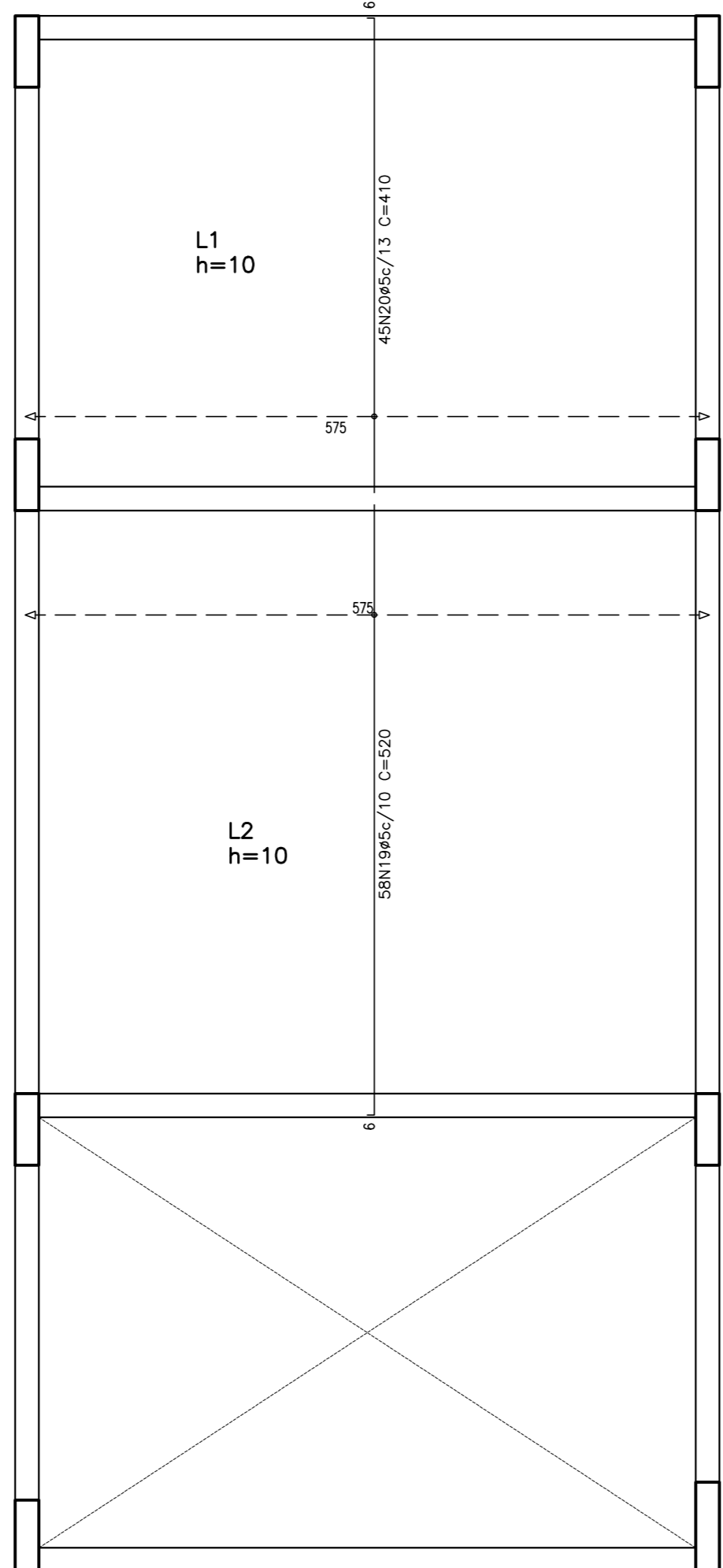
Resumo Aço BARRILETE	Comp. total (m)	Peso+10% (kg)	Total
Armadura longitudinal superior			
CA-60-B Ø4.2	96.0	12	
Ø5	102.6	18	30

BARRILETE
Armadura transversal superior
Concreto: C25, em geral
CA-50-A e CA-60-B
Escala: 1:50

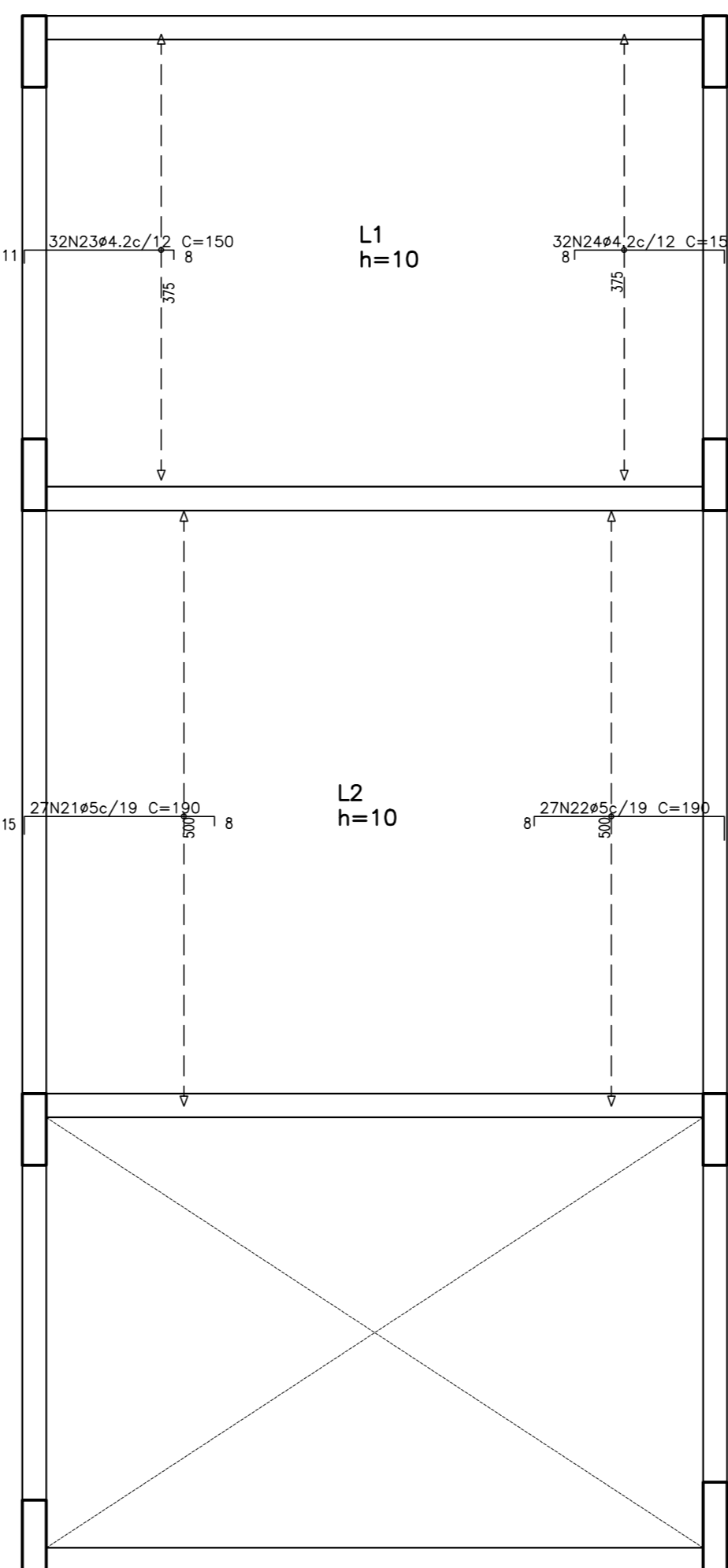
Resumo Aço BARRILETE	Comp. total (m)	Peso+10% (kg)	Total
Armadura transversal superior			
CA-50-A Ø6.3	204.8	56	56
CA-60-B Ø5	126.1	22	22
Total			78



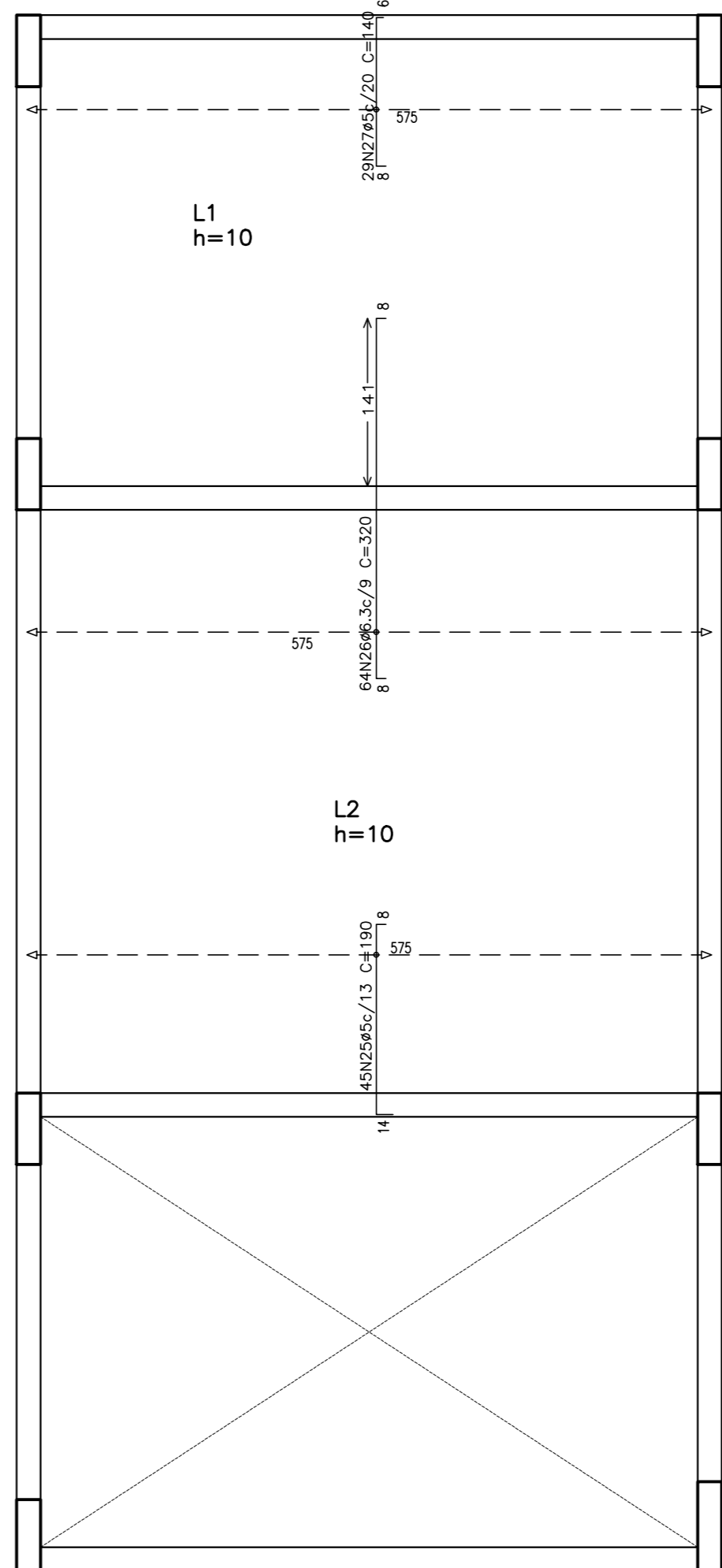
ARMADURA LONGIDUTINAL INFERIOR
BARRILETE
ESCALA: 1/50



ARMADURA TRANSVERSAL INFERIOR
BARRILETE
ESCALA: 1/50



ARMADURA LONGIDUTINAL SUPERIOR
BARRILETE
ESCALA: 1/50



ARMADURA TRANSVERSAL SUPERIOR
BARRILETE
ESCALA: 1/50

Elemento	Pos.	Diam. Ø	Deb. (mm)	Ret.(db)	Comp.(db)	Total (db)	CA=50-A	AO=80-B
P1=P7	1	Ø10	6	365	365	730	184	6.9
	2	Ø5	29	152	152	304	84	1.5
	3	Ø5	29	152	152	304	84	1.5
	Total=730						152	9.0
P2	4	Ø10	8	365	365	730	18.3	8.3
	5	Ø5	29	182	182	364	98	1.6
	6	Ø5	29	152	152	304	84	1.3
	Total=730						208	10.6
P3=P4=P6	7	Ø10	6	365	365	730	13.8	1.6
	8	Ø5	29	152	152	304	84	6.9
	9	Ø5	29	152	152	304	84	1.5
	Total=730						152	9.0
P5	10	Ø10	8	365	365	730	18.3	6.9
	11	Ø5	29	152	152	304	84	1.5
	12	Ø5	29	152	152	304	84	1.3
	Total=730						208	9.0
P8	13	Ø12.5	6	375	375	750	20.1	7.0
	14	Ø10	2	365	365	730	4.6	1.4
	15	Ø5	29	153	153	306	87.0	7.0
	16	Ø5	29	153	153	306	87.0	7.0
Armatura longitudinal inferior	17	Ø6.3	29	8	587	8	29.4	9.2
	18	Ø5	8	587	8	599	17371	27.3
Total=1000							45.9	30.0
Armatura transversal inferior	19	Ø5	58	6	514	520	140	29.0
	20	Ø5	45	6	404	410	18450	29.0
Total=1000							84.0	
Armatura longitudinal superior	21	Ø5	23	167	8	175	53.0	8.6
	22	Ø5	27	162	20	190	53.0	8.1
	23	Ø4.2	32	8	131	139	480	5.2
	24	Ø4.2	32	8	131	131	150	480
Armatura transversal superior	25	Ø5	44	168	8	190	8550	13.4
	26	Ø6.3	64	304	8	312	200	50.6
	27	Ø5	29	126	6	140	480	6.4
	Total=1000							55.7
							Ø4.2: 20	0.15
							Ø5: 0	0.274
							Ø6.3: 101.6	0
							Ø10: 121.3	0
							Ø12.5: 24.3	0
							Total: 247.2	238.9

Nota:

Pranchas de referência: 19/64

[illegible]